

ASTRALPOOL HEAT PUMP CATALOGUE

STANDARD AND INVERTER HEAT PUMP RANGE



Flexibility: Extend your swimming season or swim all year round



Environmentally Friendly: Lower operating costs and noise levels



Inverter Technology: Reduce heating times and save on running costs



HeatPumpGO: Optional wireless Wi-Fi control with your smartphone



HEATPUMPGO
SMART APP CONTROL



WHAT ARE THE BENEFITS OF HEAT PUMPS?

Heat pumps absorb 80% of the heat in the air to help heat the pool: that means free heating!

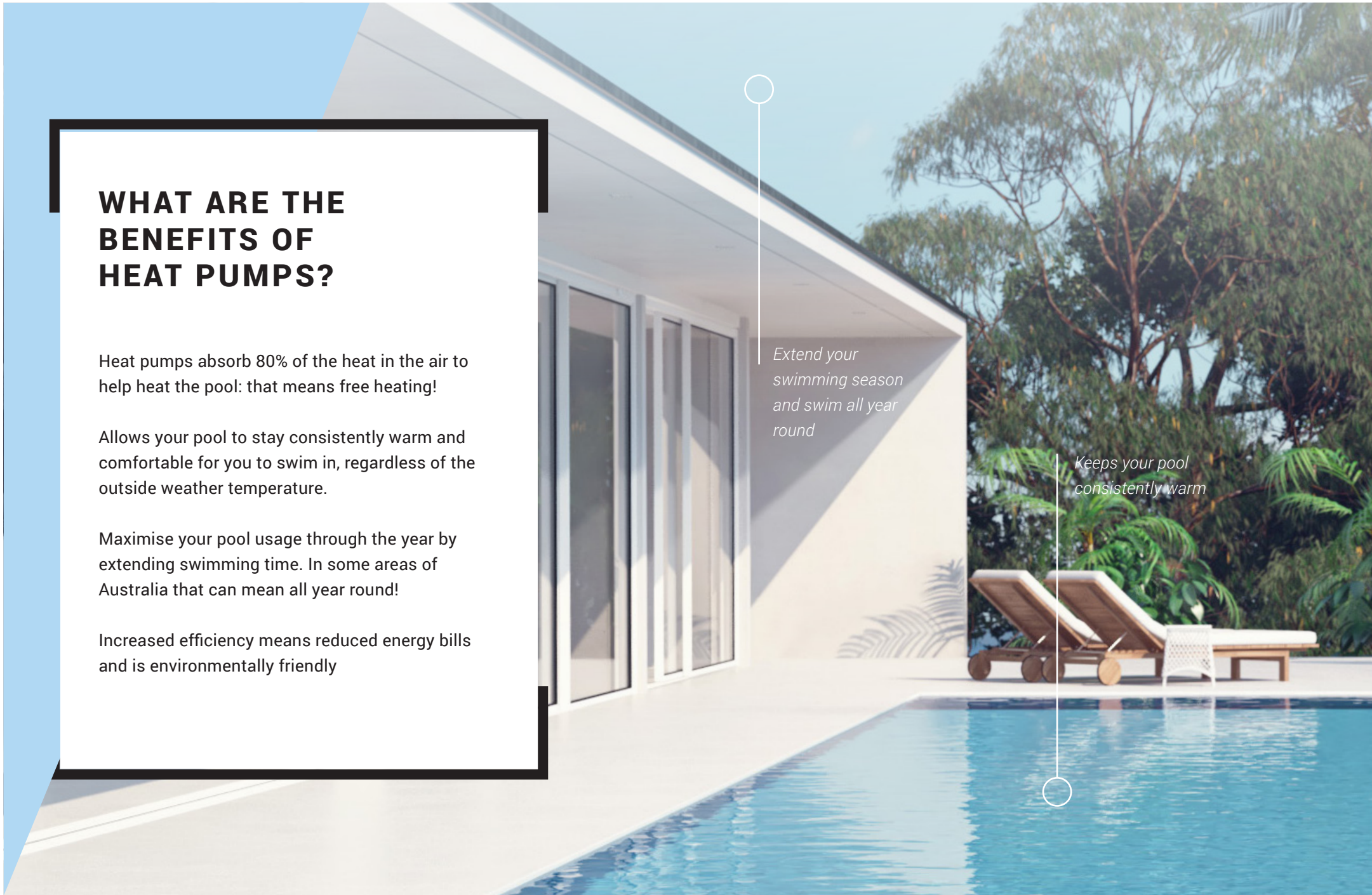
Allows your pool to stay consistently warm and comfortable for you to swim in, regardless of the outside weather temperature.

Maximise your pool usage through the year by extending swimming time. In some areas of Australia that can mean all year round!

Increased efficiency means reduced energy bills and is environmentally friendly

Extend your swimming season and swim all year round

Keeps your pool consistently warm





WHAT ARE THE EXTRA BENEFITS OF INVERTER HEAT PUMPS?

INVERTER TECHNOLOGY

AstralPool's range of Inverter technology heat pumps uses up to 15-30% less power consumption when compared to a non-inverter heat pump.

SILENT MODE

The Inverter technology also reduces the noise due to a unique internal ventilation design, the addition of silent mode allows you to operate at anytime without disturbing the neighbours.

TOP DISCHARGE OPTION

With the innovative vertical exhaust design option, the top discharge inverter heat pump can be installed next to virtually any installation in tight spaces.

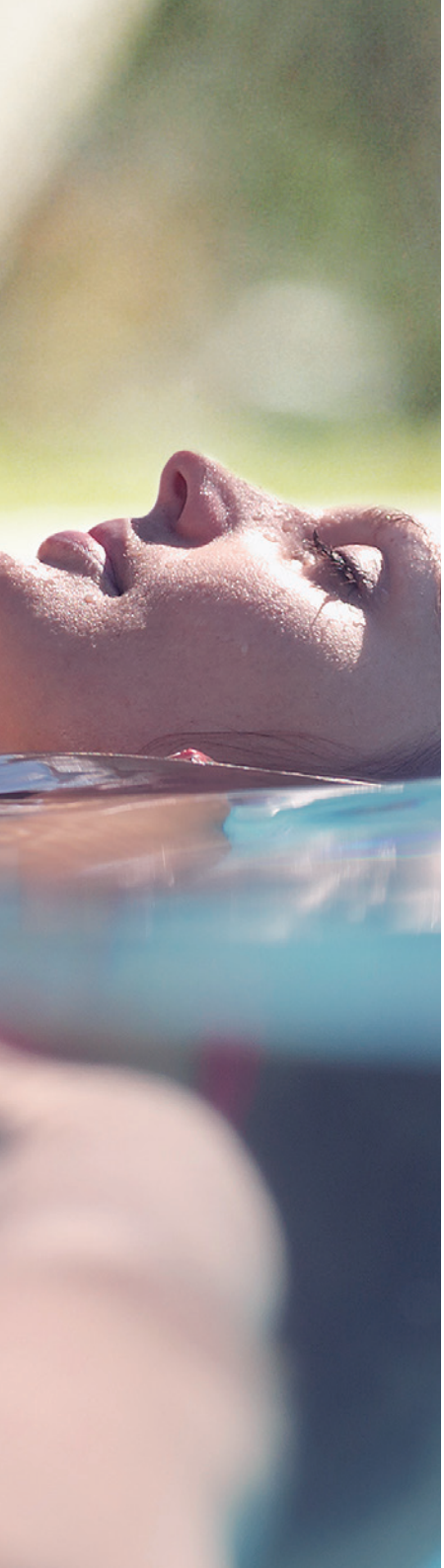


LCD SCREEN

Easy intuitive control of settings

WIFI CONTROL

Optional wifi module



MAKE SWIMMING A PLEASURE

ENVIRONMENTALLY FRIENDLY

AstralPool Heat Pumps are an environmentally friendly option to heat your pool. Operating on a similar principle to your refrigerator or air conditioner, Heat Pumps use environmentally friendly refrigerant gas that extracts the latent heat from the air and transfers this heat into the pool water.

BUILT FOR AUSTRALIAN ENVIRONMENTS

Unlike many other heat pumps, the corrosion proof titanium heat exchanger is enclosed in a purpose designed and fully injection moulded housing for maximum strength and long life. The fully moulded plastic Heat Pump case is impervious to corrosion and guarantees maximum life regardless of location, "seaside" tropical north or outback.

QUIET COMPRESSOR

A nearly silent compressor moves the refrigerant gas through a coil (called evaporator) through which air is forced and collects heat from the surrounding atmosphere. The now superheated refrigerant gas then passes through a titanium heat exchanger (called a condenser) which transfers the heat into the pool water and the cycle starts again.

ENERGY EFFICIENT

For every 1 kW of electricity consumed, AstralPool Heat Pumps will collect up to 13 kW of heat from the atmosphere. Sunshine is not necessary and your Heat Pump will continue to heat your pool in air temperatures as low as 7 degrees. So even if the nights are cold, or the days leading up to the weekend are cool, your AstralPool Heat Pump can heat and maintain your pool water temperature at a comfortable swimming temperature.

SIZING OPTIONS

AstralPool has a wide selection of heat pumps to suit virtually any size swimming pool, from small residential pools to large public pools. When choosing your heat pump, AstralPool recommend you assess your lifestyle and determine when you want to use your pool.

If you wish to swim during the summer and shoulder season only, a small heat pump can be installed, saving on up front costs and ongoing operating costs. However, for all year round swimming, we have the right heat pump too, to ensure you can use your pool at any time of the year.

OPTIONAL WIFI CONTROL

WIFI CONTROL WITH HEATPUMPGO

Monitor and set your pool's temperature even if you're away on a business trip or holiday through your home's WiFi, with the optional WiFi module (sold separately). With the HeatPumpGO app (available for Android and iOS devices), your pool temperature will always be right at your fingertips wherever you are!



HEATPUMPGO
SMART APP CONTROL



HOW TO SELECT THE BEST HEAT PUMP FOR YOUR NEEDS

STEP 1

Determine how you wish to use your pool: take the chill off the water during spring, summer and autumn, luxuriate in warm relaxing water for most of the year, or swim all year round regardless of the weather conditions.

STEP 2

Determine the size of your pool, average length and width and the average depth.

STEP 3

Once you understand your preferred use of your pool, go to astralpool.com.au/heatpump and use the Heat Pump sizing guide to select the model AstralPool Heat Pump to suit your pool and lifestyle. Alternatively, visit your local AstralPool dealer for expert advice on the heat pump that suits you.



STANDARD

Model	HP88	HP126
Product Code	78540	78541
Input Power	1.5 kW	2.2 kW
Heating Capacity	8.8 kW	12.6 kW
at efficiency of (COP)	5.7	5.7
Power	10A Plug	15A Plug
Voltage/Phases/Frequency	240/1/50	240/1/50
Running Current (Amp)	7.0	9.6
Noise Level dB(A)	51	54
Water Connection (1m)	50	50
Recommend Water Flow (lpm)	50	75
Water Pressure Loss (kPa)	6	10
Dimension (L x W x H)	956x372x600	956x372x600



INVERTER

SIDE DISCHARGE

TOP DISCHARGE

Model	iHP90	iHP120	iHP170	iHP195	iHP242	iHP283	iHPt127	iHPt168	iHPt246
Product Code	78542	78543	78544	78545	78546	78547	78560	78561	78562
Input Power	1.6 kW	2.1 kW	3.0 kW	3.9 kW	4.8 kW	5.57 kW	0.22-2.2 kW	0.31-2.98	0.47-4.94
Heating Capacity	9.0 kW	12.0 kW	17.0 kW	19.5 kW	24.2 kW	28.3 kW	2.8-12.7 kW	3.9-16.8	5.9-24.6
at efficiency of (COP)	13.44-5.63	13.57-5.66	12.57-5.63	12.43-5	12.39-5	12.41-5	12.73-5.77	12.58-5.64	12.55-4.98
Power	10A Plug	15A Plug	Single	Single	Single	Triple	15A Plug	Single	Single
Voltage/Phases/Frequency	240/1/50	240/1/50	240/1/50	240/1/50	240/1/50	400/3/50	230V/1P/50Hz	230V/1P/50Hz	230V/1P/50Hz
Running Current (Amp)	0.8-8.62	0.9-9.2	1.3-13.1	1.6-17.1	2.0-20.9	1.67-9.2	0.9-9.6	1.53-12.9	2-21.47
Noise Level dB(A)	50	52	53	56	57	58	41-54	42-56	48-58
Water Connection (1m)	50	50	50	50	50	50	50	50	50
Recommend Water Flow (lpm)	54	70	90	110	143	167	70	90	143
Water Pressure Loss (kPa)	4.0	4.5	5	6	11	15	3	4	11
Dimension (L x W x H)	1003x410x767	1003x410x767	1110x480x870	1110x480x870	1163x470x1275	1163x470x1275	723x835x865	723x835x865	770x990x970

Test Conditions: Air Temp: 27 °C, Water Temp 26 °C, RH 80%

Available at your nearest AstralPool Stockist :

Discover more at
astralpool.com.au/heatpump

FLUIDRA
ASTRALPOOL 

